

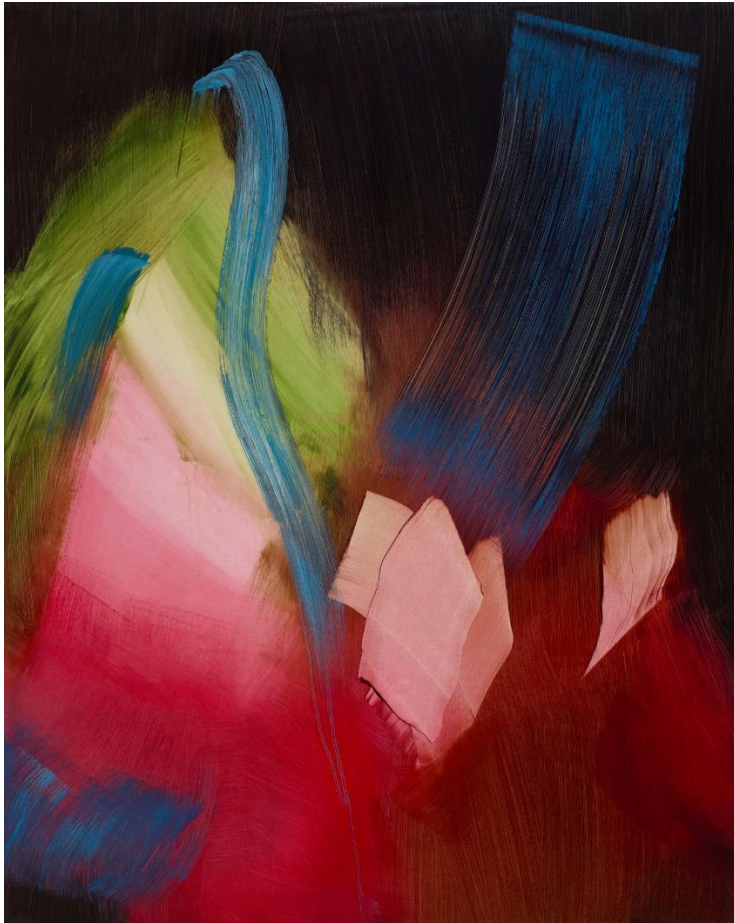
The Boston Globe

THE TICKET

What's happening in the arts world

Updated August 12, 2021, 2:33 p.m.

ELISE ANSEL Ansel, a painter's painter who works wet-on-wet, uses old master paintings as source material to create fluid, gestural abstractions. It's as if she's pulling the vaunted old scenes authored by Great Men through time's vortex and revealing them to be something new — shorn of history's traps but still rooted in its essence, something that shimmers and hums. *Through Sept. 1. Schoolhouse Gallery, 494 Commercial St., Provincetown. 508-487-4800, www.gallerieschoolhouse.com* CATE McQUAID



Elise Ansel's "Outrageous Interference II."

LUC DEMERS/COURTESY OF THE SCHOOLHOUSE GALLERY